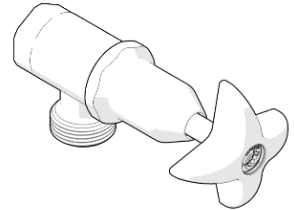


## Product Installation Guidelines & Scope of Use

# Vandal Resistant CP-BS Lead Safe™ Washing Machine Taps



### PRODUCTS

Item Code	Description	Headwork
174.03.02.01	Vandal Resistant CP-BS Lead Safe™ J/V Washing Machine Tap - Cold	Jumper Valve
174.03.02.02	Vandal Resistant CP-BS Lead Safe™ J/V Washing Machine Tap - Hot	Jumper Valve
174.03.08.00	Vandal Resistant CP Lead Safe™ 1/2 Turn C/D W/Machine Tap (Hot/Cold/Warm)	Ceramic Disc

### SPECIFICATIONS

- Vandal resistant handle featuring a locking ring to secure the handle to the spindle which may only be removed using the key provided.
- Chrome plate finish for easy cleaning and added durability.

**IMPORTANT:** All taps are tested in accordance with AS 3718 and leave our premises in good working order.

\*Our Lead Safe™ product range is compliant with the Lead-Free Requirements of the NCC 2022 Vol. Three, Clause A5G4(2) and NSF/ANSI 372.

\*\* Any flow controller incorporated in the outlet to be tightened to prevent removal by hand. As Per AS3718.

**WARNINGS:** Special attentions to be paid on notes, photos, images, or drawings of assembly steps marked with the warning symbol.



### TECHNICAL DATA

Inlet	G ½" - Female	
Outlet	G ¾" - Male	
Working Pressure Range (kPa)	Min	50
	Max	500
Working Temperature Range (°C)	Min	5
	Max	80
Nominal Flow Rate (LPM)	N/A	
Finish	Chrome	

**NOTE:** Galvin Engineering continually strive to improve their products. Specifications may change without notice.

### TOOLS REQUIRED

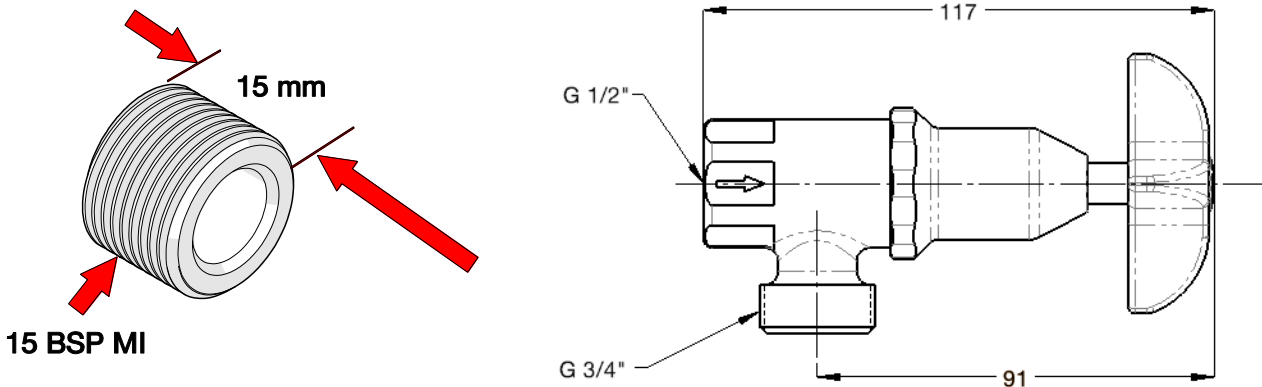
- Power drill	- Spanner	- Hex key	- Thread tape
---------------	-----------	-----------	---------------

### PRE-INSTALLATION - MOUNTING DETAILS

## Wall Spud

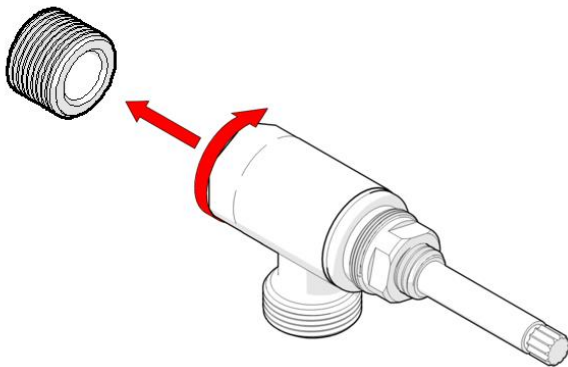
- Wall spuds must be G 1/2" MI and protrude from the finished wall by no more than 15mm

**Note:** In some situations a male thread connection on the tap may be more suited. If so, please contact Galvin Engineering on 1300 514 074.



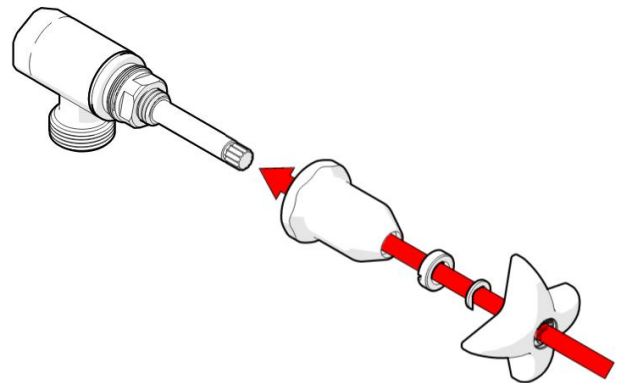
## INSTALLATION

**IMPORTANT:** Galvin Engineering products must be installed in accordance with these installation instructions and in accordance with AS/NZS 3500, the PCA and your local regulatory requirements. Water and/or electrical supply conditions must also comply to the applicable national and/or state standards. Failing to comply with these provisions shall void the product warranty and may affect the performance of the product.



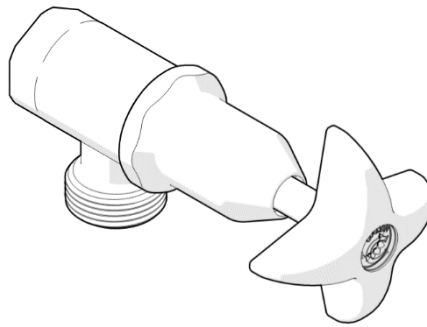
### 1. Fit washing machine body

- Fit the washing machine body assembly to the spud and fasten with a spanner.
- We recommend using thread tape or equivalent to ensure the connection does not leak.
- **DO NOT** tighten the body by using the top assembly.



### 2. Fit handle

- Ensure the spindle is in the closed position then fit bonnet and handle
- Secure the handle using the “C” circlip and locking ring.



### 3. Testing

- Once temperature indicator is fitted, check the operation of the unit and inspect for any leaks.

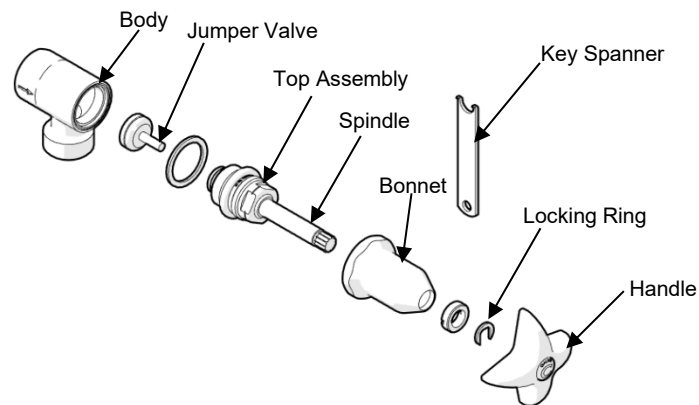
### TROUBLESHOOTING

PROBLEM	CAUSE	RECTIFICATION
Taps are dripping water	Jumper valves are worn or damaged	Replace jumper valve
	Tap seat is damaged	Refurbish tap seat using a reseating tool.
Water is leaking from spindle	O-ring on jumper valve spindle is damaged or worn	Replace o-ring
Water is not flowing from tap	Water is turned off	Turn water on
Spindle is difficult to turn	Build up of scale on spindle, spindle worn or o-ring has been damaged	Remove jumper valve, clean and regrease. Replace o-ring. Complete SBA may need to be replaced.
Handle is loose	Screw has come loose	Tighten locking ring

## SERVICE AND MAINTENANCE

### JUMPER VALVE TAPWARE

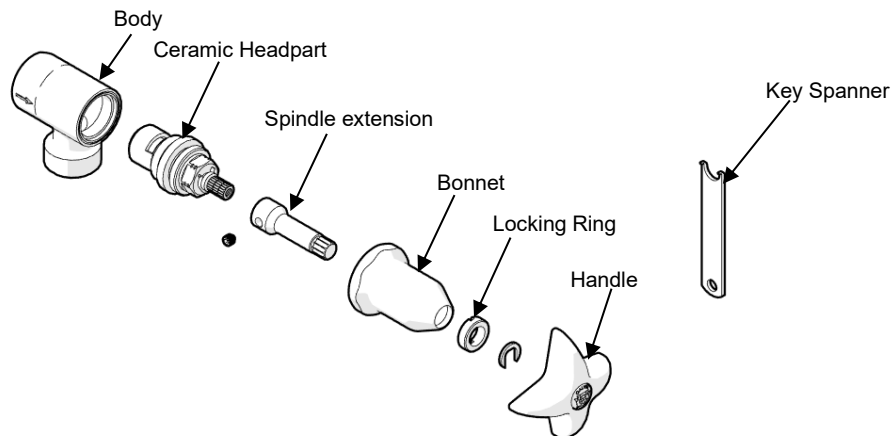
1. Turn off the water supply and turn on the tap handle to drain water from the bodies.
2. Remove the handle from the tap using supplied key spanner to unscrew locking ring.
3. Unscrew the bonnet and top assembly from the body.
4. Check the o-ring on the spindle and the jumper valve for wear and damage. Replace if required.
5. Clean the spindle and body of debris.
6. Place a new o-ring (if required) onto the spindle and re-grease with potable water approved grease.
7. Re-assemble item and re-install as per product installation guide.



## SERVICE AND MAINTENANCE

### CERAMIC DISC TAPWARE

1. Turn off the water supply and turn on the tap handle to drain water from the bodies.
2. Remove the handle from the tap using supplied key spanner to unscrew locking ring.
3. Unscrew the ceramic headpart from the body.
4. Check the o-ring on the ceramic headpart for wear and damage. Replace if required.
5. Clean the headpart and body of debris.
6. Replace the ceramic head part and hand tighten back into the body.
7. Re-assemble item and re-install as per product installation guide.



### WARRANTY

Galvin Engineering products are covered under our Manufacturer's Warranty. Galvin Engineering products must be installed in accordance with the installation instructions and in accordance with AS/NZS 3500 and NCC Volume Three, relevant Australian Standards and local authorities applicable to product being installed. Water and electrical supply conditions must also comply to the applicable national and/or state standards, failing to comply with these provisions may void the product warranty and affect performance of the product.

Please visit [www.galvinengineering.com.au](http://www.galvinengineering.com.au) to view the full warranty, our Installation Compliance and Maintenance & Cleaning information as well as any other additional information.

Within Australia: **1300 514 074** Outside Australia: P: **+61 (0)8 9338 2344**

F: **+61 (0)8 9338 2340**

[sales@galvinengineering.com.au](mailto:sales@galvinengineering.com.au)

[www.galvinengineering.com.au](http://www.galvinengineering.com.au)

ABN: 78 008 719 382

PERTH | SYDNEY | MELBOURNE | BRISBANE | ADELAIDE

